



**LC1001/LC1011 Series
Compression**

0-500 lb to 0-2 Mlb
0-2 kN to 0-9 MN

**LC1001 = Cable Style
LC1011 = Connector
Style**

1 Newton = 0.2248 lb
1 daNewton = 10 Newtons
1 lb = 454 g
1 t = 1000 kg = 2204 lb

\$895

**Model Shown
Connector Style**

- 0.25% Interchangeable for Multiple Load Cell Applications
- 5- Point NIST Traceable Calibration Standard
- Canister Design Ideal for Axial Compression Applications
- Heavy Duty Environmentally Sealed Case for Harsh Environments
- FM/CSA Approved Intrinsically Safe Standard
- FM/CSA Approved for Hazardous Locations - Optional

**For Sales and Service
In U.S.A. and Canada**

**1-800-872-3963SM
1-800-USA-DYNE**

**International Customers Dial
(614) 965-9340
24-Hour FAX (614) 965-9438**

OMEGADYNESM FAX

OMEGADYNE's 24-Hour
On-Line Publishing Service

**1-800-344-3963SM
1-800-DIG-DYNE**

Document # 3618

OMEGADYNE, Inc.

149 Stelzer Court, Sunbury, OH 43074

http://www.omegadyne.com

e-mail: info@omegadyne.com



© COPYRIGHT 1996 OMEGADYNE, INC. ALL RIGHTS RESERVED.

**MADE IN
USA**

NIST

**FM
APPROVED**



**SPEC SHEET
LC1001/LC1011**

*Interchangeable with
Model TH-CC1*

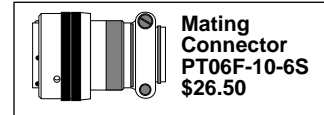
**CANISTER STYLE
COMPRESSION
LOAD CELL
HEAVY DUTY
DESIGN**



**Custom Units
Available with
Built-in Amplifiers.**

MODEL LC1011-10K

Shown Smaller Than Actual Size

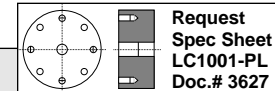


**Mating
Connector
PT06F-10-6S
\$26.50**

Prices Shown in U.S. Dollars

► Most Popular Models Highlighted ◀

To Order: (Specify Model Number)



Request
Spec Sheet
LC1001-PL
Doc.# 3627

Canister Style Compression Load Cell					Accessories			
Range (lb)	Cable Style	Connector Style	Price	Compat. Meters	Base Plate** Model	Price	Top Plate** Model	Price
0-500	LC1001-500	LC1011-500	\$895	INFW,INFS	LC1000-BP4	\$48	LC1000-TP4	\$48
0-1000	LC1001-1K	LC1011-1K	895	INFW,INFS	LC1000-BP4	48	LC1000-TP4	48
0-2500	LC1001-2.5K	LC1011-2.5K	895	INFW,INFS	LC1000-BP4	48	LC1000-TP4	48
0-5000	LC1001-5K	LC1011-5K	895	INFW,INFS	LC1000-BP4	48	LC1000-TP4	48
0-10K	LC1001-10K	LC1011-10K	895	INFW,INFS	LC1000-BP4	48	LC1000-TP4	48
0-20K	LC1001-20K	LC1011-20K	895	INFW,INFS	LC1000-BP4	48	LC1000-TP4	48
0-50K	LC1001-50K	LC1011-50K	895	INFW,INFS	LC1000-BP4	48	LC1000-TP4	48
0-100K	LC1001-100K	LC1011-100K	1250	INFW,INFS	LC1000-BP6	68	LC1000-TP6	68
0-200K	LC1001-200K	LC1011-200K	1650	INFW,INFS	LC1000-BP8	126	LC1000-TP8	126
0-300K	LC1001-300K	LC1011-300K	2200	INFW,INFS	LC1000-BP9	146	LC1000-TP9	136
0-500K	LC1001-500K	LC1011-500K	3900	INFW,INFS				
0-1M	LC1001-1M	LC1011-1M	4700	INFW,INFS				
0-2M	LC1001-2M	LC1011-2M	6200	INFW,INFS				

Interchangeable with Model TH-CC1

Metric Ranges Available - Consult Engineering

**** Base Plates and Top Plates are Carbon Steel, To Order All Stainless Steel Specify: LC1000-BP4-SS, \$80, LC1000-TP4-SS, \$80. LC1000-BP6-SS, \$140. LC1000-TP6-SS, \$140. LC1000-BP8-SS, \$260. LC1000-TP8-SS, \$260.**

To order an FM approved hazardous locations version add suffix "-FM" to the part number and add \$150 to the price. To order a Dual Bridge Load Cell add suffix "-DUAL" to the part number and add \$250 to the price.

Ordering Examples: 1.) LC1001-100K is a 100,000 lb capacity cable style load cell, \$1250. Accompanying Base Plate is LC1000-BP6, \$68. Accompanying Top Plate is LC1000-TP6, \$68. 2.) LC1011-5K-FM is an FM approved for hazardous locations, 5,000 lb capacity, connector style load cell, \$895+150 = \$1045. Accompanying Base Plate is LC1000-BP4, \$48. Accompanying Top Plate is LC1000-TP4, \$48. Mating Connector (not included), PT06F-10-6S \$26.50

Printed On Recycled Paper





SPECIFICATIONS

Output: 2 mV/V \pm .005 mV/V
 Calibrated at 0%, 50%, 100%, 50%, 0%
 Calibrated to full scale up to 300,000 lb
 Load cells over 300,000 lb calibrated at
 300,000 lb. For Full Scale Calibration
 over 300,000 lb specify option "-FS"
 after model number, **\$1,500** additional

Excitation: 10 Vdc (15 Vdc max)

Agency Approvals: FM/CSA
 Intrinsically Safe IS/I.II.III/1/CDEFG -
 Standard;

Hazardous Locations S/I/1/ABCD - Must
 be specified at time of order

Accuracy Class: \pm 0.05% FSO

Linearity: \pm 0.05% FSO

Hysteresis: \pm 0.03% FSO

Repeatability: \pm 0.02% FSO

Zero Balance: \pm 1% FS

Operating Temp. Range:

-46 to 93°C (-50 to 200°F)

Compensated Temp. Range:

16 to 71°C (60 to 160°F)

Thermal Effects: Zero 0.0015% FSO/°F
 Span 0.0008% Rdg/°F

Safe Overload: 150% of rated capacity

Ultimate Overload: 300% of rated
 capacity

Bridge Resistance: 350 ohms

FS Deflection: .007 to .012 typical

Construction: Ranges <500,000 lb:
 17-4 PH Stainless Steel

Ranges \geq 500,000 lb: High alloy steel

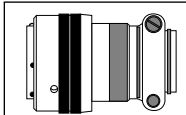
Electrical: LC1001: 15 ft (4.8m)

4-Conductor Shielded PVC cable

LC1011: PT1H-10-6P (or Equal)

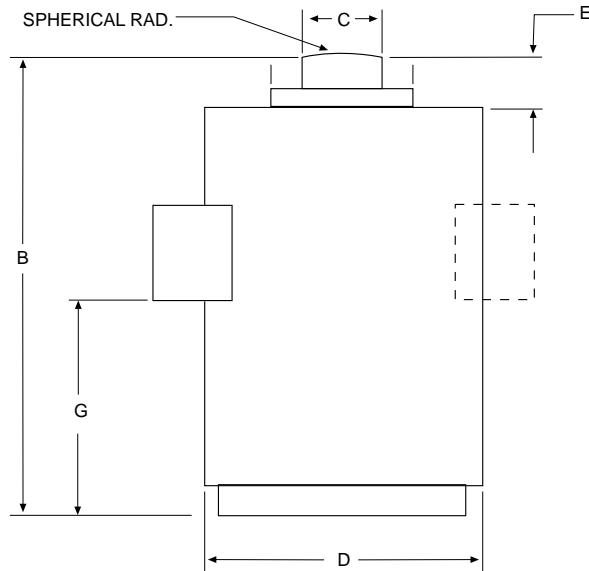
Mating Connector: (not included)

PT06F10-6S



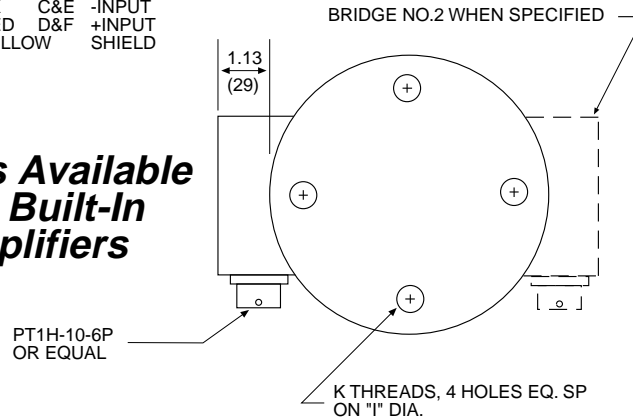
**Mating
 Connector
 PT06F-10-6S,
 \$26.50**

NOTE: Load Cells over 200,000 lb
 Capacity are supplied with two eye bolts
 for easy handling.



WIRING CODE		
WIRE	PIN	CONNECTION
GN	A	+OUTPUT
WT	B	-OUTPUT
BK	C&E	-INPUT
RED	D&F	+INPUT
YELLOW		SHIELD

Models Available with Built-In Amplifiers



Dimensions Shown in Inches (mm)

Capacity (lb)	D	B	C	E	G	I \pm .005	K (THREAD)	Weight lb (kg)
500-3K	3.50 (89)	4.6 (116)	1.25 (32)	.25 (6)	1.25 (32)	2.375 (60)	3/8-24 UNF-2B x 3/8 DP	6 (2.7)
5K-10K	3.50 (89)	5.9 (151)	1.25 (32)	.75 (19)	1.81 (46)	2.375 (60)	3/8-24 UNF-2B x 3/8 DP	10 (4.5)
20K-50K	4.50 (114)	7.5 (191)	1.25 (32)	.75 (19)	3.44 (77)	2.375 (60)	3/8-24 UNF-2B x 3/8 DP	20 (9)
100,000	5.56 (141)	9.1 (232)	1.75 (44)	1.06 (27)	4.75 (121)	4.000 (102)	1/2-20 UNF-2B x 1/2 DP	40 (88)
200,000	6.63 (168)	11.6 (295)	2.50 (64)	1.06 (27)	6.25 (159)	5.500 (140)	5/8-18 UNF-2B x 1 DP	95 (43)
300,000	8.63 (219)	14 (356)	3.00 (76)	1.31 (33)	7.63 (194)	5.500 (140)	3/4-16 UNF-2B x 1 1/4 DP	105 (48)
400,000	8.63 (219)	14 (356)	3.50 (89)	1.31 (33)	7.63 (194)	5.500 (140)	3/4-16 UNF-2B x 1 1/4 DP	140 (64)
500,000	8.63 (219)	14 (356)	3.50 (89)	.88 (22)	7.63 (194)	3.500 (89)	1/2-20 UNF-2B x 3/4 DP	170 (77)
1,000,000	8.63 (219)	14 (356)	5.50 (140)	.88 (22)	5.50 (140)	4.500 (114)	5/8-18 UNF-2B x 1.0 DP	250 (115)
2,000,000	10.75 (219)	16 (406)	7.00 (178)	1.00 (25)	6.00 (152)	5.500 (140)	1-14 UNS-2B x 1 1/4 DP	400 (182)

Look for OMEGADYNE Products on the World Wide Web!

<http://www.omegadyne.com>

e-mail: info@omegadyne.com